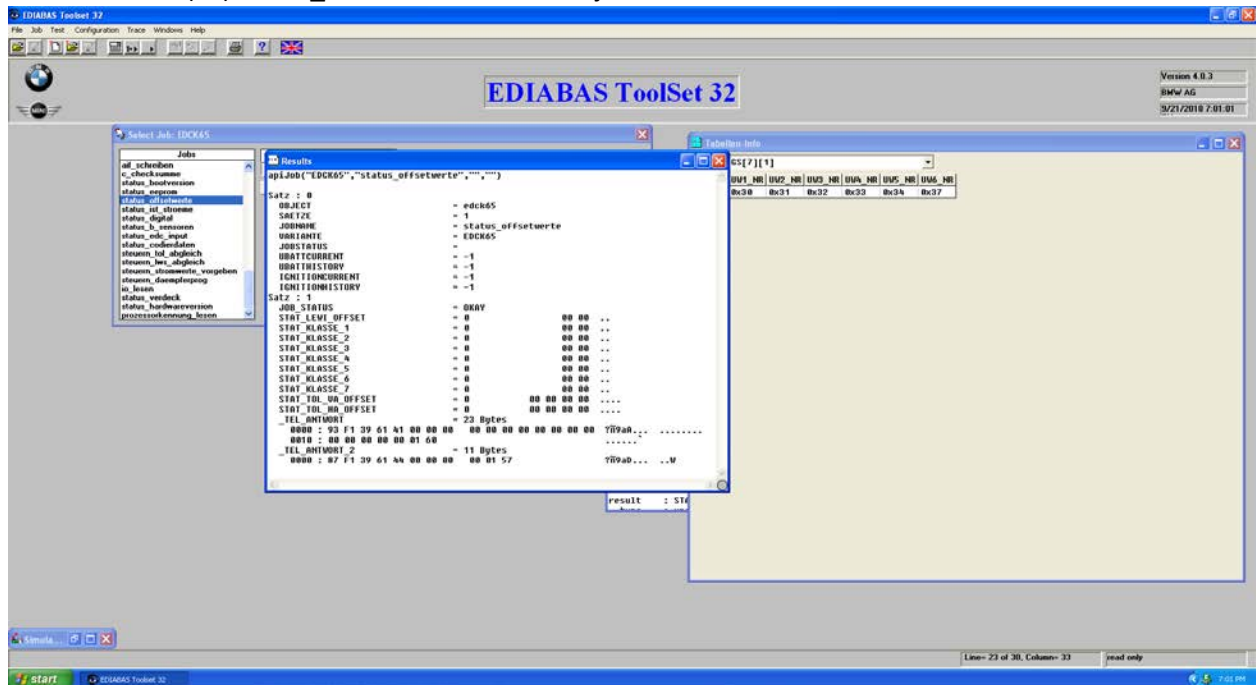


Steering Angle Offset Reset

After some experimentation with tool32, I was able to figure out how to reset the steering angle correction value that was stuck. I want to share what I did.

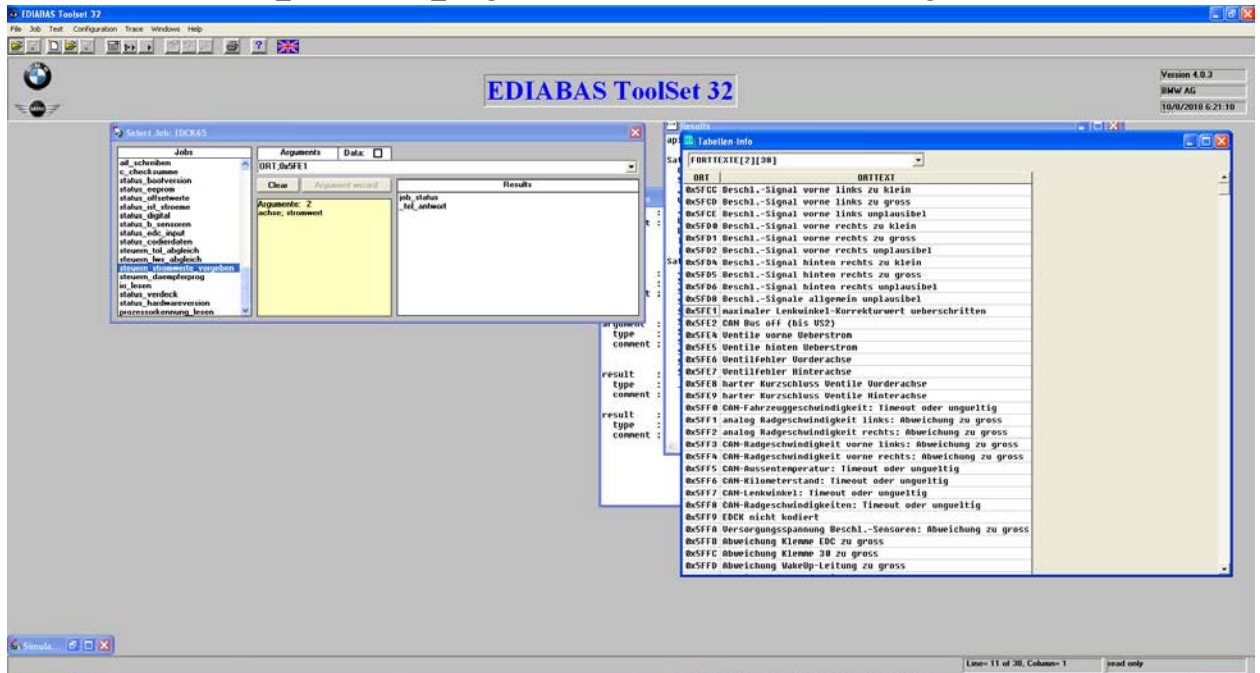
First off, this issue can may also happen if the steering angle sensor is not calibrated or if it is faulty. I had calibrated the steering angle sensor before and it did not fix the error. A faulty steering angle sensor will also trigger DSC errors which was not the case for me.

- 1) Open Tool32 and select EDCK_65.prg to read the EDC module.
- 2) Select and run (F5) status_offsetwerte under the jobs list.



- 3) Look for the value under `STAT_LEWI_OFFSET`. If you see a value other than zero, it needs to be reset.
- 4) Under the Tabellen-Info window, select Forttexte under the dropdown and select 0x5FE1. This value should now show up as an argument in the jobs window.

- 5) Select and run `steuern_stromwerte_vorgeben` with the `ORT;0x5FE1` as the argument



- 6) Close tool32, open INPA and clear error memory and turn off ignition.