

THE BMW M4 COUPE.

HOLD YOUR BREATH AND
COUNT TO FOUR.

BMW Military Sales



BMW M4 Coupe

The Ultimate
Driving Machine



The model shown above is intended as a general representation.
Starting with initial 2014 production (2015 – 1 EST)

Military Sales: \$58,700
(Prices and options shown are estimated)

- Factory-Direct Military Sales Price
- Includes Stateside 4yr/50,000 Maintenance (scheduled service - oil changes, brake pads, etc.)

All prices and specifications subject to change without notice.

Specifications:

Model Year:	2015 - ESTIMATE
Model Type:	2-Door Sport Coupe
Engine:	Straight 6-Cylinder Twin-Turbo
Transmission:	6-Speed Manual w/Oil Cooler, Dual-Disc Heavy-Duty Clutch

Horsepower:	425hp @ 5,500-7,300 rpm
Torque:	406lb/ft @ 1,850-5,500 rpm
0 – 60 mph:	3.9 sec (DCT), 4.1 sec (Man)
Mpg:	TBA

Standard Feature Highlights:

Electronically-Controlled Active M Limited-Slip Differential
M-Tuned Servotronic Speed-Sensitive Power Steering
Play-Free Ball Joints, Elastomeric Bearings
Alum. Suspension and Stiffening Plate, CFRP Strut Brace
Contoured Double-Bubble CFRP Roof
Low-Weight CFRP Drive Shaft and Trunk Lid
Aluminum Front Fenders and Hood
Air Curtain, M Gills, Smooth Underbody, Rear Spoiler Lip
Driving Dynamics Control
18" BMW V-Spoke Alloy Wheels
Performance Tires w/Tire Pressure Monitor
ABS w/Brake Drying, Stand-by and Fade Compensation
Front, Side and Head Protection System Airbags
Dual Power Heated Exterior Mirrors
Auto-Dimming Interior and Exterior Mirrors
Dynamic Cruise Control

GPS Satellite Navigation w/Touchpad iDrive
8.8" Multimedia Screen
AM/FM HI-Fi HD RDS, CD Sound System
Hands-Free Bluetooth, USB Connection
3-Function Universal Garage Door Opener
BMW Assist eCall + Teleservices in US
Anti-Theft Alarm System
Xenon Adaptive Headlights
Automatic Headlight Control
BMW Ambiance Interior Lighting
Automatic Electronic Dual-Zone Climate Control
Heated Power Front Seats w/Illuminated M Logos
Split Folding Rear Seats
M Door Sills, Driver's Footrest and Gearshift Lever
Anthracite Headliner
Carbon Fiber Interior Trim

THE OFFICIAL BMW MILITARY SALES PROGRAM AT **PENTAGON CAR SALES.**
PROUD TO SERVE US MILITARY MEMBERS OVERSEAS SINCE 1984.

BMW EfficientDynamics

Less Emissions. More driving pleasure.

Pentagon Car Sales • www.PentagonCarSales.com

More info at BIMMERPOST.com

THE BMW M4 COUPE

OPTIONAL EQUIPMENT



Some options/packages may only be available in combinations.
Please ask your BMW Product Advisor for details.

Colors:

Non-Metallic Colors: N/C



Alpine
White

Metallic Colors: \$550



Mineral
White



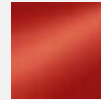
Silver
Stone



Mineral
Grey



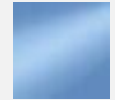
Sapphire
Black



Sakhir
Orange



Austin
Yellow



Yas
Marina Blue

Upholstery:

Cloth/Leather Combo: N/C



Carbon
Anthracite

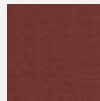
Full Merino Leather: \$950 *w/Executive Pkg: N/C Extended Merino Leather: \$2,000 *w/Executive Pkg: \$1,100



Silver
Stone



Sonoma
Beige



Sakhir
Orange



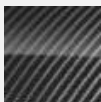
Black

Interior Trims:

Main Trim: N/C



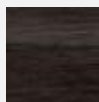
Aluminum
Blade



Carbon
Fiber

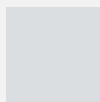


Blue
Shadow



Fineline
Wood
Anthracite

Highlight Trim: N/C



Pearl
Gloss
Chrome



High
Gloss
Black



Black
Chrome

Packages:

Executive Pkg: \$3,900

Head-Up Display
Comfort Access
Front and Rear Park Distance Control
Rear View Camera
Satellite Radio w/1 Year Sub in US
Heated Steering Wheel
Retractable Headlight Washers
Full Merino Leather
or Extended Merino Leather (+\$1,100)

Driver Assist Plus*: \$1,900

*Requires Executive Package
Side and Top-View Cameras
Lane Departure Warning
Forward Collision Warning
Pedestrian Warning
City Collision Mitigation
Active Blind Spot Detection

Lighting Pkg: \$1,900

Full LED Lights
Automatic High Beams

More info at BIMMERPOST.com

THE BMW M4 COUPE

OPTIONAL EQUIPMENT



Some options/packages may only be available in combinations.
Please ask your BMW Product Advisor for details.

Factory Installed Options:

M Dbl-Clutch 7-Spd Trans w/DriveLogic	\$2,900	Harman Kardon Premium Surround Sound	\$875
Adaptive M Suspension	\$1,000	Enhanced USB Bluetooth/Smartphone Int.	\$350
19" Double-Spoke Alloys w/Perf. Tires	\$1,200	Parallel Parking Assistant *req. Exec. Pkg.	\$500
19" Black Dbl-Spoke Alloys w/Perf. Tires	\$1,200	Concierge Services in US	\$250
Power Rear Sunshade	\$350	M Carbon Ceramic Brakes	\$7,500
Side + Top-View Cameras *req. Exec. Pkg.	\$750	Active Cruise Control	\$1,200
Automatic High-Beams	\$250	Power Moonroof* (*will delete Carbon Roof)	N/C

Cilajet Exclusive Aftermarket Protection Package: \$895



Aviation Grade Automotive Sealant
Bonds on a Molecular Level
Complete Exterior Paint Protection
Upholstery and Carpet Protection
Alloy Wheel Protection
Offered in Europe Exclusively by Pentagon
10 Year Exterior / 5 Year Interior Warranty

BMW Direct Stateside Delivery: \$925

Includes:

Port to Port Shipping – Continental USA
(Shipping Surcharge – Alaska / Hawaii / Puerto Rico +\$750)
All Port Clearances and Handling
Inland Transportation to BMW Service Dealer

Pre-Delivery Inspection at BMW Service Dealer
US Federal Import Tax
(*State Sales Tax & Registration Fees – not included!)

Warranty/Maintenance:

BMW new car warranty in USA: 48 months / 50,000 miles (from date of first delivery)
BMW Full Maintenance Program: 48 months / 50,000 miles (from date of first delivery-applies only in the USA)

All estimated information at: Jan. 15, 2014

Reproduction of this document on the Internet is strictly prohibited.

Pentagon Car Sales serving you in these US Military Communities.

GERMANY

Kaiserslautern
Heidelberg
Spangdahlem
Wiesbaden/Mainz

ITALY

Aviano
Vicenza
Naples
Sigonella

SPAIN

Rota

Pentagon Car Sales • www.PentagonCarSales.com **More info at BIMMERPOST.com**