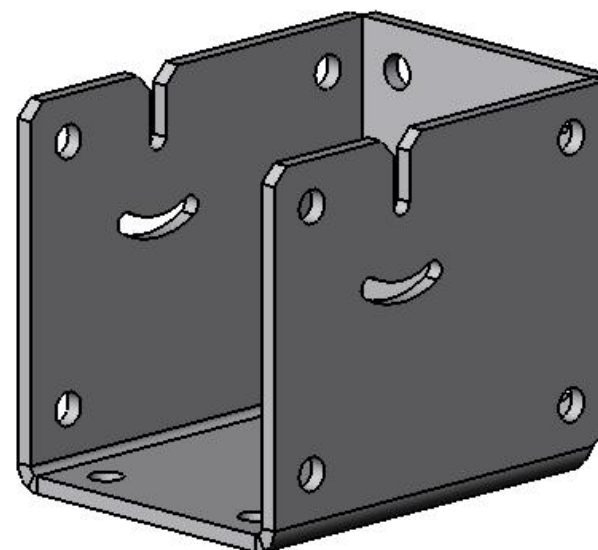
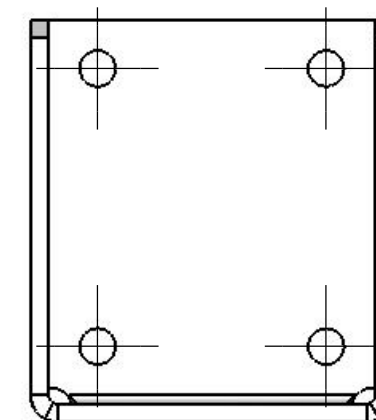
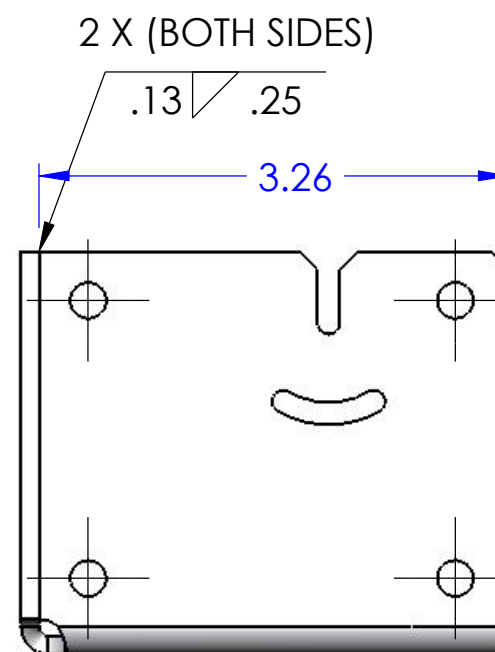
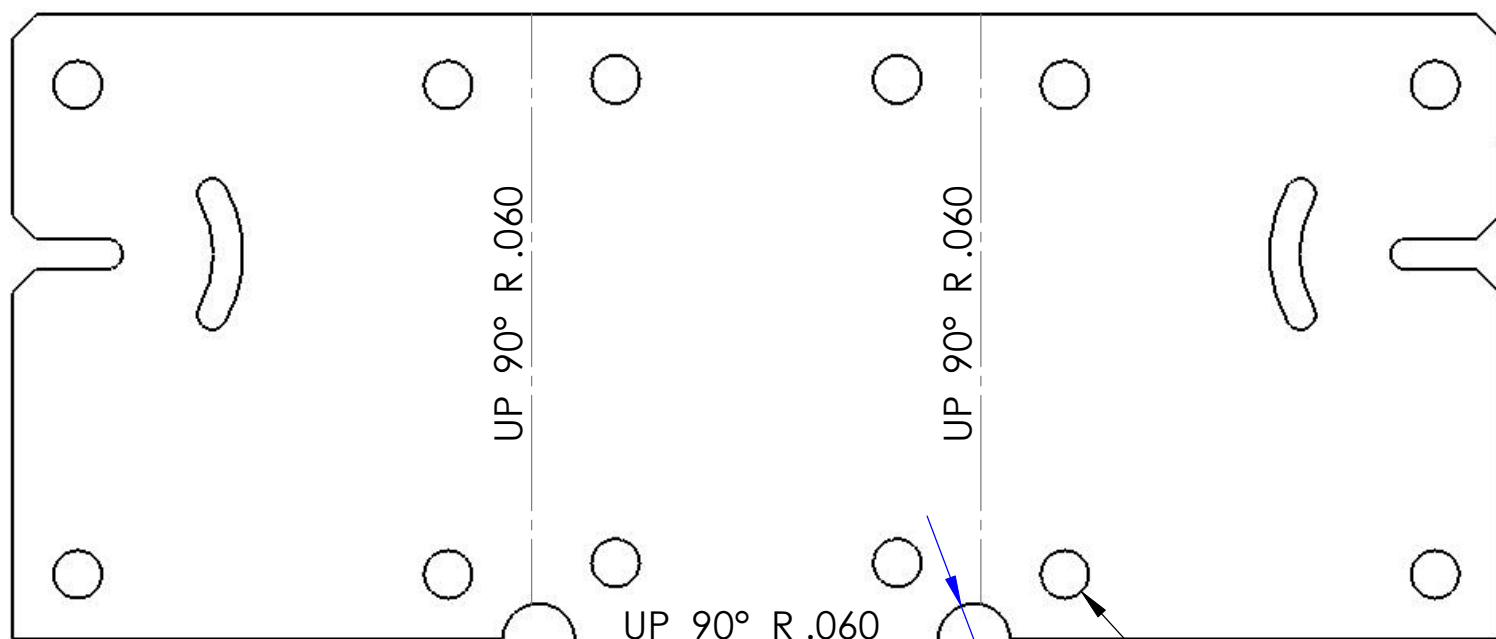
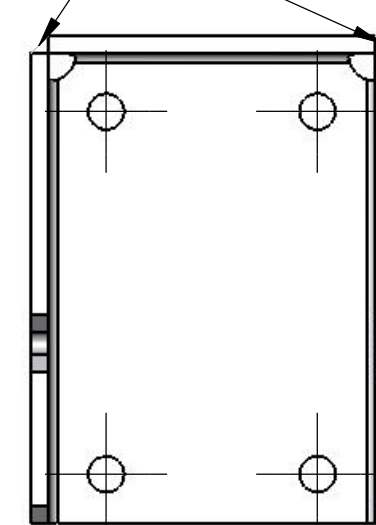


1. MATERIAL: .125 THICK 5052-H32 ALUMINUM ALLOY SHEET.
2. FINISH: BLACK ANODIZE PER MIL-A-8625, TYPE II, CLASS 2.
3. DEBURR AND BREAK ALL SHARP EDGES .01 MIN.
4. ALL DIMENSIONS APPLY AFTER ALL PROCESSES.
5. INSTALL FROM INSIDE PEM F-0420-3 OR EQ. PER MFG. RECOMENDATIONS.
6. ALL GEOMETRY CAD GENERATED. CONTACT FLIR MECHANICAL ENGINEERING FOR FILE TRANSFER.

| REVISIONS | | | | |
|-----------|-----|--------------------------------|----------|----------|
| ZONE | REV | DESCRIPTION | DATE | APPROVED |
| | 010 | INITIAL RELEASE PER ECO 100340 | 7/3/2007 | |



(2 X FILLET WELD
.25 LONG MIN)



UP 90° R.060
UP 90° R.060
UP 90° R.060
16 X (5)
2 X (R.188) MIN RELIEF AS NECESSARY
2.267

1:1 FLAT PATTERN

| | | | | | |
|---|--|---|-------------|----------|---|
| THIRD ANGLE PROJECTION | | INFORMATION CONTAINED IN THIS DOCUMENT IS PROPRIETARY. THIS DOCUMENT AND DATA DISCLOSED HEREIN OR HEREON IS NOT TO BE REPRODUCED, USED, OR DISCLOSED IN WHOLE OR IN PART TO ANYONE WITHOUT THE WRITTEN PERMISSION OF FLIR SYSTEMS, INC. | | | |
| INTERPRET DRAWING PER ASME Y14.5M-1994 | MATERIAL | SEE NOTE 1 | PROJECT NO. | | Indigo Operations 70 Castilian Drive Goleta, CA 93117 |
| | FINISH | SEE NOTE 2 | APPROVALS | DATE | |
| UNLESS OTHERWISE SPECIFIED SURFACE ROUGHNESS 32 X = ±.1 .XX = ±.01 .XXX = ±.005 ANGULAR = ±.5° FILLET RADII = .005 MAX | UNLESS OTHERWISE SPECIFIED ALL MEASUREMENTS ARE IN INCHES. ALL DIMENSIONS IN [] ARE MM. DO NOT SCALE DRAWING. | | DWN W BURT | 7/3/07 | TITLE |
| | CALC WT: 0.366 LBS | | CHK | | MOUNT, UNIVERSAL, PATHFINDER |
| | | | DSGN W BURT | 7/3/07 | SIZE |
| | | ENG | | B | 064Y2 |
| | | APP | | DWG NO. | 261-1470-00 |
| | | | | REV | 010 |
| | | | | SCALE | 3:4 |
| | | | | PRINTED: | 7/20/2007 |
| | | | | SHEET | 1 OF 1 |